

# NETGEAR

Installation Guide

Connect with Innovation™

## NETGEAR GS728TS, GS728TPS, GS752TS, GS752TPS Smart Switch™

### Start Here

#### Verify Package Contents

- NETGEAR Smart Switch
- Rubber footpads for tabletop installation
- Power cord
- Rack-mount kit for installing the switch in a 19-inch rack
- Installation Guide
- Smart Switch Resource CD that includes the Smart Control Center Utility and Hardware Installation Guide. (A link to the online Software Administration Manual is on the Resource CD.)

#### Prepare a PC with an Ethernet adapter and a CD ROM drive

Prepare a PC with an Ethernet adapter and a CD ROM drive.

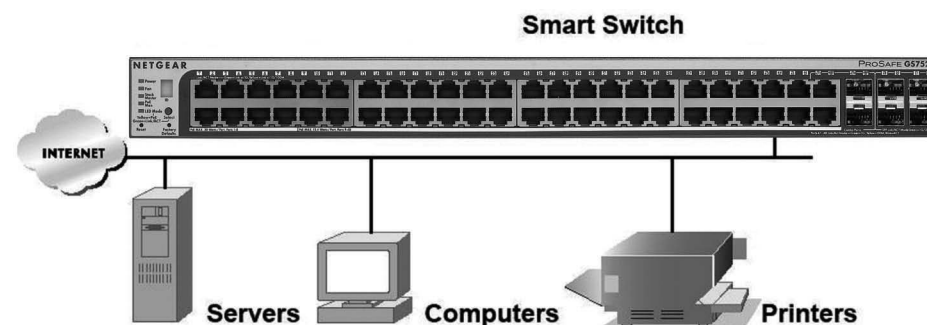
#### Install the Smart Control Center Utility on a PC

1. Insert the Resource CD into your CD drive.
2. Run the Setup program to install the Smart Control Center Utility. The Installation Wizard will guide you through the installation.

#### Connect Your Smart Switch in the Correct Order


These instructions assume you are using DHCP in your network. If you are using static IP addressing in your network, configure the switch IP address before connecting it to your network. In the absence of a DHCP server, the switch will default to 192.168.0.239 for its IP address. To configure the switch before connecting it to your network:

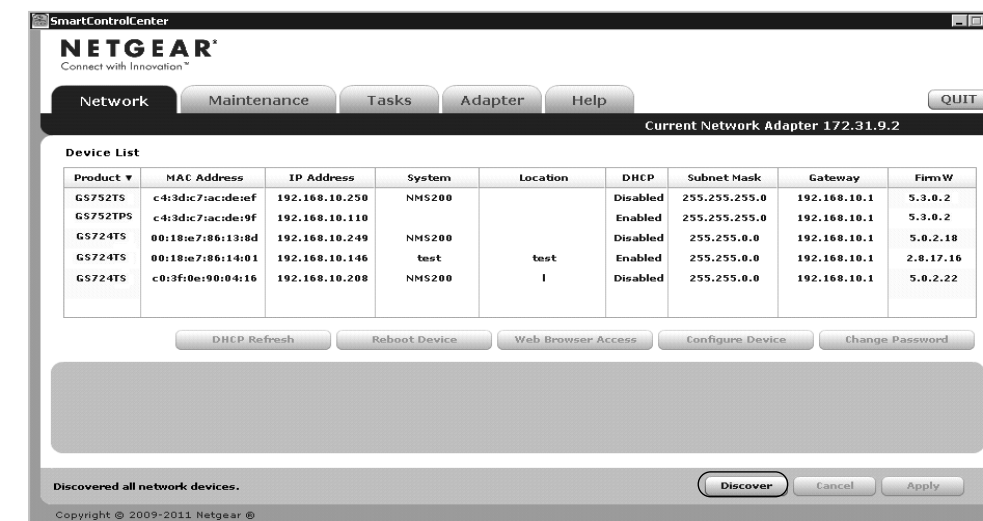
1. Set up the PC with a Static IP address in the 192.168.0.x subnet, and connect the PC to the switch. Then, use the Smart Control Center Utility to configure the switch.
2. Connect each PC to an RJ-45 network port on the switch front panel. Use category 5 (Cat5) unshielded twisted-pair (UTP) cable terminated with an RJ-45 connector to make these connections.



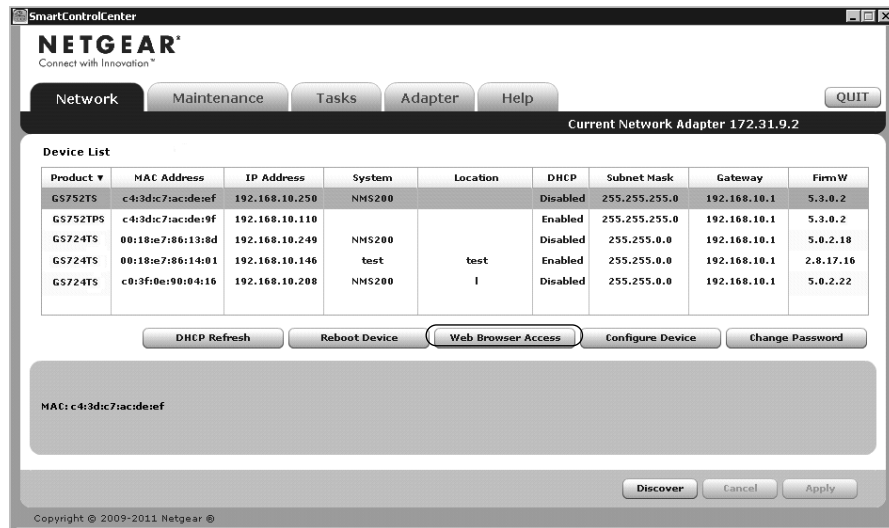
3. Connect the switch to your network.
4. Power on the switch.
5. Verify that the PC with the Smart Control Center Utility is on the same subnet as the switch.

#### Configure the Switch with the Smart Control Center Utility

1. Double-click the Smart Control Center Utility icon  on your desktop or in Windows Start menu Programs to run the utility and view this screen.



2. Click Discover to find your switch in the network.



The Smart Control Center Utility finds the switch and displays its MAC Address, IP Address, and model number. If you cannot configure your switch, verify that the cable connections are secure, that the IP address configuration of the PC is in the same subnet as the switch, and click the Discover button.

- Click to select the line displaying the details of your switch. If there are multiple switches in your network, be sure to select the one you want to configure.
- Click Web Browser Access to view the switch log in screen.



- Enter the default password of password in lower case letters and click Login. The switch will display the switch settings main page. Configure the switch for your network. Consult the Reference Manual on the Resource CD or the online help in the switch for assistance with configuration procedures.

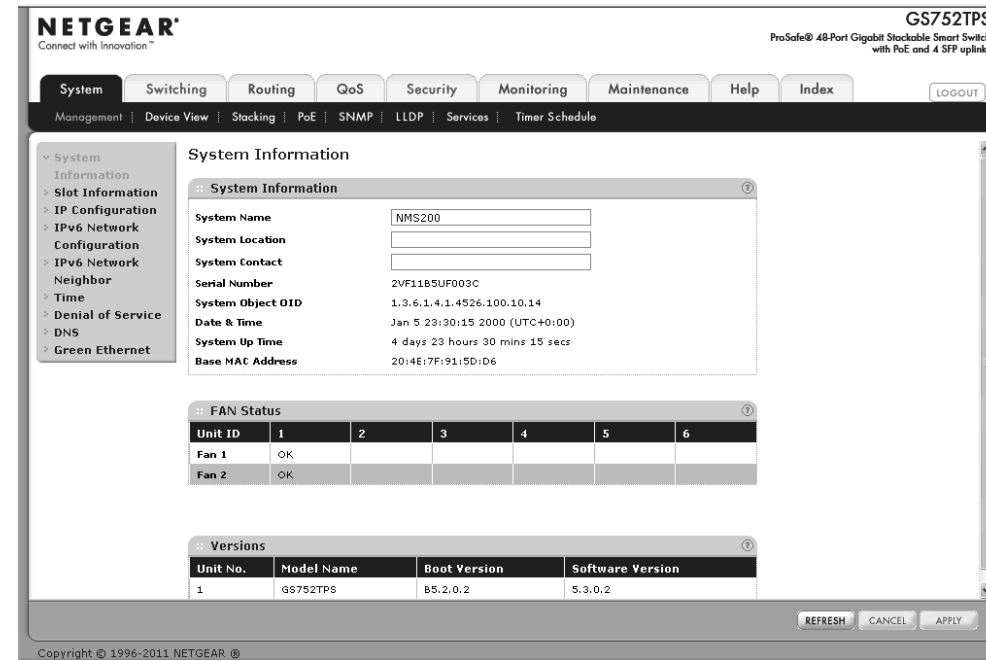


201-14527-01



November 2011

After you log in to the switch, the main Web Browser Access menu displays.



Use the configuration menu options to configure your switch.

## Troubleshooting Tips

Here are some tips for correcting simple problems you may have.

- Be sure to power on your PC and switch in the correct sequence. Follow this sequence. Turn off the switch and computer. First, turn on the switch and wait two minutes. Next, turn on the computer.
- Make sure the Ethernet cables are securely plugged in. For each powered on computer connected to the switch with a securely plugged in Ethernet cable, the corresponding switch LAN port status light will be lit.

- Make sure the network settings of the computer are correct. In most cases, computers should be configured to obtain an IP address via DHCP. For help with this, refer to the Reference Manual; a link to the online Reference Manual is on the Resource CD.

If your network uses static IP addresses, be sure the switch and computer are configured with valid IP addresses.

## Technical Support

Thank you for selecting NETGEAR products.

After installing your device, locate the serial number on the label of your product and use it to register your product at <http://www.NETGEAR.com/register>. Registration is required before you can use the telephone support service. Registration via our website is strongly recommended.

Go to <http://support.netgear.com> for product updates, documentation, and support.

For additional information about setting up, configuring, and using your GS7xxTS/TPS, see the *Software Administration Manual*.

For complete DoC please visit the NETGEAR EU Declarations of Conformity website at: [http://support.netgear.com/app/answers/detail/a\\_id/11621/](http://support.netgear.com/app/answers/detail/a_id/11621/)

For GNU General Public License (GPL) related information, please visit [http://support.netgear.com/app/answers/detail/a\\_id/2649](http://support.netgear.com/app/answers/detail/a_id/2649)

### WARNING!!

DO NOT stack equipment, or place equipment in tight spaces, or in drawers. Be sure your equipment is surrounded by at least 2" of air space.



This symbol was placed in accordance with the European Union Directive 2002/96 on the Waste Electrical and Electronic Equipment (the WEEE Directive). If disposed of within the European Union, this product should be treated and recycled in accordance with the laws of your jurisdiction implementing the WEEE Directive.

NETGEAR, the NETGEAR logo, and Connect with Innovation are trademarks and/or registered trademarks of NETGEAR, Inc. and/or its subsidiaries in the United States and/or other countries. Information is subject to change without notice. Other brand and product names are registered trademarks or trademarks of their respective holders. © 2011 NETGEAR, Inc. All rights reserved.