

## Eaton Enclosures



Eaton's Enclosure solutions address the first critical step in planning an ideal data centre and encompass a wide range of cabinets and racks for network, telecom and server applications.

### 19" Cabinet

Vendor neutral and highly flexible 19" enclosure provides multiple solutions in the data centre and IT infrastructure environment.

#### Features:

- Lightweight but sturdy
- Stylish contoured front door provides 2,649.22cm<sup>2</sup> total open area. Exceeds major IT equipment air flow requirements
- Vendor neutral, compatible with all 19" standard IT equipment
- Depth adjustable 19" vertical mounting rails
- "U" numbers printed on rails
- Quick release and field reversible doors
- Overall height on casters, just under 2 metres, fits through standard doorway
- Two piece side panels provides easy access to interior
- Available in flatpack or fully assembled cabinet
- Quick assembly time, approximately 30 minutes

#### Specifications:

- Overall dimensions: 600W x 1000D x 1950H
- Useable height: 42U
- Load rated to 1,000 kg static
- Standard: EIA-310D, IEC-60297-2
- Material: high-grade cold and hot rolled steel/all materials RoHS compliant
- Finishing: 5 stage iron phosphate pre-treatment followed by tough scratch resistant powder coat paint



*Powering Business Worldwide*

# Eaton Enclosures

Description	Dimensions (H x W x D)	Part Number
<b>Enclosures</b>		
Eaton Enclosure, 42U, Sidewalls, Single Front Door, Split Rear Doors, Castors (Shipped flat-packed, requires assembly)	1995 x 600 x 1000 (42U)	<b>ER61042-FP</b>
Eaton Enclosure, 42U, Sidewalls, Single Front Door, Split Rear Doors, Castors (fully assembled)	1995 x 600 x 1000 (42U)	<b>ER61042</b>
<b>Accessories</b>		
ER61042 Castor Kit	N/A	<b>ERA001</b>
1U Cable Management Panel	1U x 600 x 100	<b>ERA002</b>
2U Cable Management Panel	2U x 600 x 100	<b>ERA003</b>
Document Wallet	250 x 250	<b>ERA004</b>
Hardware Bag (50 x M6 Screws, 50 x Cage Nuts, 50 x Plastic Washers)	N/A	<b>ERA005</b>
Light Equipment Shelf	2U x 600 x 330	<b>ERA006</b>
Vented Fixed Shelf	1U x 600 x 700	<b>ERA007</b>
Telescopic Shelf	1U x 600 x 700	<b>ERA008</b>



# Eaton ePDU

## Enclosure Power Distribution Units

With today's changing technology and the demand for reliability, data centre professionals need sophisticated equipment to monitor consumption at a server level as well as at the data center level to understand and control what is happening within their infrastructure.

## Wide choice of models

Eaton ePDUs feature the broadest portfolio in the industry across all power densities and technologies to satisfy the needs of every data centre. This complete suite of power products is designed specifically to help data centre IT managers understand their rapidly escalating power requirements.

The ePDU family includes models with a variety of power inputs and outputs to fit your power requirements. You can select from IEC (C13 & C19) and local Australian output sockets, EN 60309, IEC (C14 & C20) or unterminated cords for connection directly to the output terminals of the UPS.

The ePDU range includes an extensive range of vertical Zero U products that do not occupy server space in racks as well as 1U and 2U formats. Environmental Monitoring options are also available.

From single to dual corded, four technology options, the broadest power range and the ability to manufacture ePDUs with custom arrangement of outlets (number and type) for every region, Eaton ePDUs are distinguished for their quality, dependability and versatility. All products are designed for the specific application with an emphasis on safety and reliability.



Powering Business Worldwide

## Eaton ePDU

### Basic ePDU

Designed for reliable and cost effective power distribution, Basic ePDUs have the form factor and outlet choices to meet your needs. All ePDUs, including basic ePDUs, are made of rugged aluminium chassis and incorporate fully shrouded circuit breakers and switches.

- Rugged construction
- Data centre grade components
- Multiple mounting options
- Fully shrouded circuit breakers and switches
- High-density units available to support blade servers and network switches

### Metered ePDU

Metered ePDUs offer an easy-read digital ammeter for easy start-up and provisioning of servers. The display is large and bright and can be viewed from afar and through perforations in the cabinets. The ePDU assures easy management and monitoring for current requirements and future expansion.

- Local ammeter display enables load balancing and load segmentation
- Easy-read digital ammeter
- True RMS ammeter provides accurate power measurement



Example 1U and 2U configurations

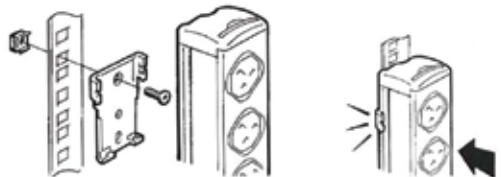
### Multiple Mounting Options



Side Mounting



End Mounting



Blind Mounting



Powering Business Worldwide

# Eaton ePDU

### Monitored ePDU

Monitored ePDUs offer customers the ability to remotely monitor the current draw over an Ethernet connection. This allows the user to aggregate the information from thousands of ePDUs in one location. All monitored ePDUs also include an easy-read digital ammeter for local provisioning and load balancing of servers.

The multi-channel Ammeter allows the monitoring of current on input and each branch circuit to ensure accurate load balancing. The Ammeter can manually or automatically scroll through up to eight circuits. Eaton ePDU's offer a reliable, scalable solution for your current and future requirements.

- Monitor current draw over an Ethernet connection
- Easy-read digital ammeter with up to 8 circuits
- Accurate load balancing
- True RMS ammeter provides accurate measurement
- Manual or auto scrolling through circuits

### Switched ePDU

Switched ePDUs offer customers the ability to remotely monitor the current draw over an Ethernet connection and allow remote switching of individual receptacles. All Switched ePDUs also include an easy-read digital ammeter for local provisioning and load balancing of servers.

- Individually control outlets via Serial or Ethernet connection
- Voltage Monitoring and Current Monitoring (per group of 8 Outlets)
- Local current meter display shows current draw
- External inputs for Temperature, Humidity, and switch-closure sensors
- Strapping allows control of up to 23 slave units from a master unit

### Managed ePDU

Manage your power consumption to the individual server level. Managed ePDUs have unprecedented management and monitoring capabilities.

User-definable grouping and sequencing of outlets with time delays allow controlled remote boot-up of servers and equipment. 256-bit encryption ensures secure communication and IPMI and SMASH CLI capability provides harmonised user access to computer hardware and ePDUs.

- Monitor and control individual outlets to manage the efficiency of the Data Centre at server level
- Comprehensive monitoring to the outlet level (Amps, Volts, Watts)
- Individual outlet switching enables remote reboot of servers
- User defined grouping and sequencing of outlets over multiple ePDUs (for A&B feed)
- Communication using SSL, TELNET, http, https, SNMP, IPMI, SMASH CLI, Serial 256-bit encryption security and in-built firewall
- Email capability for instant alert notification
- SNMP network management protocol enables you to monitor thousands of ePDUs in the network
- Optional temperature and humidity sensors available



# EATON

Powering Business Worldwide

# Eaton ePDU

### In-Line Monitored ePDU

Retrofit for existing PDUs without power metering.

Designed for new or retrofit applications, our in-line monitoring units provide simple single and dual fed local and remote monitoring solutions. Available with IP connectivity, as well as the Easy-Read digital ammeter.

- Adds power distribution monitoring to existing or Legacy data centres
- Available in 16A & 32A, single & dual circuits
- 19" horizontal mounting or 0U vertical mounting
- Single or Dual fed – allows A and B feeds to be monitored
- Fuse-less and breaker-less design: no inline break

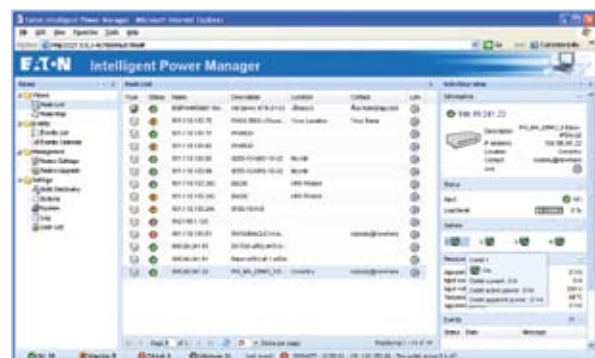


### Supervise your ePDU power distribution with Intelligent Power Manager

Intelligent Power® Manager, is a new power monitoring software product from Eaton. It supports Eaton Monitored and Managed ePDU products as well as UPS, so customers can monitor and manage their power distribution via one interface and one IP address.

#### Benefits:

- Monitor and manage multiple ePDUs and UPS systems over an IP network using a standard web browser
- IPM provides details of ePDU parameters, measurements and settings, from any point in the network, simply using the IP address of each ePDU
- Drill down to individual devices
- User-definable alarms including E-mail and SMS alerts through a single point
- Supervision and management of a whole system through a single user interface
- Configurable views
- Automatic discovery of devices
- Free of charge for up to 10 devices (ePDU or UPS)



Powering Business Worldwide

# Eaton ePDU

## Topsellers

Description	Input Connection	Form Factor	Dimensions (H x W x D)	Part Number
<b>Basic</b>				
Rack Mount Surge Filter, 8 x 10A Aust 3 pin outlets	10A, Aust 3 pin	1U	441 x 120 x 44	SF8RM
ePDU, Basic, 16 x 10A Outlets	10A, IEC320	0U	601 x 57 x 48	PW102BA0UB95
ePDU, Basic, 10 x 10A Outlets, 2 x 16A Outlets	16A, IEC320	1U	436 x 57 x 48	PW104BA1UB98
ePDU, Basic, 12 x 10A Outlets	16A, IEC320	1U	482 x 45 x 190	PW104BA1UB54
ePDU, Basic, 20 x 10A Outlets, 4 x 16A Outlets	16A, IEC320	0U	848 x 57 x 48	PW104BA0UB97
FlexPDU, 12 x IEC320 C13 Outlets	16A, IEC320	1U	483 x 80 x 44	M68438
FlexPDU, 6 x Aust 3 pin Outlets	16A, IEC320	1U	483 x 80 x 44	M68445
ePDU, Basic, 20 x 10A Outlets, 4 x 16A Outlets	16A, IEC309	0U	848 x 57 x 48	PW104BA0UB96
ePDU, Basic, 24 x 10A Outlets	32A, IEC309	0U		PW107BA0UB87
ePDU, Basic, 20 x 10A Outlets, 4 x 16A Outlets	32A, IEC309	0U	981 x 57 x 48	PW107BA0UB88
EXRT PDU, 8 x 10A Outlets, 4 x 16A Outlets	Hardwired	2U	483 x 90 x 90	M66857
<b>In-Line Monitored</b>				
ePDU, In-Line Monitored, 1 x 16A IEC309 Output	16A, IEC309	0U	436 x 57 x 48	PW107MI0UC05
ePDU, In-Line Monitored, 2 x 16A IEC309 Output	2 x 16A, IEC309	0U	436 x 57 x 75	PW107MI0UB81
ePDU, In-Line Monitored, 1 x 32A IEC309 Output	32A, IEC309	0U	436 x 57 x 48	PW107MI0UC04
ePDU, In-Line Monitored, 2 x 32A IEC309 Output	2 x 32A, IEC309	0U	436 x 57 x 75	PW115MI0UB80
<b>Monitored</b>				
ePDU, Monitored, 8 x 10A Outlets	10A, IEC320	1U	482 x 45 x 110	PW102MI1UB47
ePDU, Monitored, 16 x 10A Outlets	10A, IEC320	0U	838 x 57 x 48	PW102MI0UB95
ePDU, Monitored, 8 x 10A Outlets	16A, IEC320	1U	482 x 45 x 110	PW104MI1UB48
ePDU, Monitored, 20 x 10A Outlets, 4 x 16A Outlets	16A, IEC320	0U	1097 x 57 x 48	PW104MI0UB97
ePDU, Monitored, 20 x 10A Outlets, 4 x 16A Outlets	16A, IEC309	0U	1097 x 57 x 48	PW104MI0UB96
ePDU, Monitored, 12 x 10A Outlets, 4 x 16A Outlets	32A, IEC309	2U	482 x 90 x 300	PW107MI2UB94
ePDU, Monitored, 20 x 10A, 4 x 16A outlets, 2 x MCB	32A, IEC309	0U	1428 x 57 x 48	PDU107MI0UB88
<b>Switched</b>				
ePDU, Switched, 8 x 10A Outlets, local/remote control	16A, IEC320	1U	482 x 250 x 43	PW104SW1UB48
ePDU, Switched, 8 x 10A Outlets	16A, IEC320	1U	482 x 250 x 43	PW104SW1UB49
ePDU, Switched, 8 x 10A Outlets	16A, IEC320	0U	1066 x 60 x 60	PW104SW0UB78
ePDU, Switched, 16 x 10A Outlets	16A, IEC320	0U	1778 x 60 x 60	PW104SW0UB79
<b>Managed</b>				
ePDU, Managed, 8 x C13 Outlets	10A, IEC320	1U	482 x 45 x 190	PDU102MA1UB47
ePDU, Managed, 12 x C13 Outlets	10A, IEC320	0U	1253 x 57 x 48	PDU102MA0UA64
ePDU, Managed, 20 x C13 Outlets	16A, IEC320	0U	1798 x 57 x 48	PDU104MA0UA53
ePDU, Managed, 16 x C13 Outlets	16A, IEC320	0U	1483 x 57 x 48	PDU104MA0UA67
ePDU, Managed, 12 x C13 Outlets, 4 x C19 Outlets	16A, IEC309	0U	1426 x 57 x 116	PW104MA0UB76
ePDU, Managed, 20 x C13 Outlets	16A, IEC309	0U	1798 x 57 x 48	PW104MA0UB99
ePDU, Managed, 16 x C13 Outlets	32A, IEC309	0U	1663 x 57 x 93	PW107MA0UA50
<b>Bypass and Transfer Switches</b>				
Pulsar STS 16	2 x 16A, IEC320	1U	445 x 250 x 43	M66028
Eaton eATS	2 x 16A, IEC320	1U	445 x 250 x 43	PWATSSC20001
HotSwap Maintenance Bypass, Aust 3 pin outlets	2 x 16A, IEC320	1U	483 x 80 x 44	M68443
HotSwap Maintenance Bypass, IEC outlets	2 x 16A, IEC320	1U	483 x 80 x 44	M68433
HotSwap Maintenance Bypass, Hardwired	2 x 16A, IEC320	1U	483 x 80 x 44	M68434